

## EFFECT OF ACUFIRST® IMPOTENCE & FRIGIDITY BRACELET ON SEXUAL DYSFUNCTION

**Author:**



**Dr Michel LE FAOU**



*Laureate from the Medicine Faculty of Paris XII  
Laureate from the National Academy of Medicine*

*Practitioner – Associate to Physical Medicine Department at the Hotel-Dieu(Paris)*

*Vice president of the SMAC : Chinese Acupuncture Medicine Society*

*CE of the AECOL : association for the education in Manual-Osteopathy medicine et Natural Medicine*

*CE of GMI : Green Medicine International : humanitarian aid by Natural Medicine*

Date: May 30<sup>th</sup> 2009

CONTENTS

<b>1</b>	<b>STUDY RATIONALE AND EXPERIMENTAL DEVICE .....</b>	<b>4</b>
<b>2</b>	<b>STUDY DESIGN AND INVESTIGATORS .....</b>	<b>5</b>
<b>3</b>	<b>ASSESSMENT OF THE SEXUAL DYSFUNCTION .....</b>	<b>6</b>
3.1	QUESTIONNAIRE “WOMEN” .....	6
3.2	QUESTIONNAIRE “MEN” .....	6
<b>4</b>	<b>SUBJECT CHARACTERISTICS.....</b>	<b>6</b>
<b>5</b>	<b>STUDY RESULTS .....</b>	<b>7</b>
5.1	STUDY DATA AND STATISTICAL ANALYSIS.....	7
5.2	EFFICACY ON SEXUAL DYSFUNCTION .....	8
5.2.1	<i>Results for Women.....</i>	<i>8</i>
5.2.1.1	Effect of the ACUFIRST® Impotence & Frigidity bracelet on disorders of the sexual desire.....	8
5.2.1.2	Effect of the ACUFIRST® Impotence & Frigidity bracelet on the pain coital.....	9
5.2.1.3	Effect of the ACUFIRST® Impotence & Frigidity bracelet on the drop in sexual activity .....	10
5.2.2	<i>Results for Men .....</i>	<i>11</i>
5.2.3	<i>Frequency of use of the ACUFIRST® Impotence &amp; Frigidity bracelet .....</i>	<i>12</i>
5.2.4	<i>Subjects' global appreciation on efficacy of the ACUFIRST® Impotence &amp; Frigidity bracelet .....</i>	<i>13</i>
<b>6</b>	<b>DISCUSSION .....</b>	<b>16</b>
<b>7</b>	<b>CONCLUSION .....</b>	<b>17</b>
<b>8</b>	<b>BIBLIOGRAPHY.....</b>	<b>17</b>
<b>9</b>	<b>DATA LISTINGS .....</b>	<b>18</b>

## LIST OF TABLES

Table 1: Effect of the ACUFIRST® Impotence & Frigidity Bracelet on the disorders of the female desire .....	8
Table 2: Effect of the ACUFIRST® Impotence & Frigidity Bracelet on the pain coital.....	9
Table 3: Effect of the ACUFIRST® Impotence & Frigidity Bracelet on the drop in sexual activity.....	10
Table 4: Effect of the ACUFIRST® Impotence & Frigidity Bracelet on the Male Sexual Incapacity.....	11
Table 5: Frequency of use of the ACUFIRST® Impotence & Frigidity Bracelet .....	12
Table 6: Subjects' global appreciation on efficacy of the ACUFIRST® Impotence & Frigidity bracelet on sexual dysfunction (all subjects) .....	13
Table 7: Day-by-day distribution of the Subjects' Global Appreciation on Efficacy of the ACUFIRST® Impotence & Frigidity bracelet on Sexual Dysfunction.....	14

## LIST OF FIGURES

Figure 1: Effect of the ACUFIRST® Impotence & Frigidity Bracelet on the disorders of the female desire .	8
Figure 2: Effect of the ACUFIRST® Impotence & Frigidity Bracelet on the pain coital .....	9
Figure 3: Effect of the ACUFIRST® Impotence & Frigidity Bracelet on the drop in sexual activity.....	10
Figure 4: Effect of the ACUFIRST® Impotence & Frigidity Bracelet on the Male Sexual Incapacity.....	11
Figure 5: Subjects' global appreciation on efficacy of the ACUFIRST® Impotence & Frigidity bracelet on sexual dysfunction (all subjects) .....	13
Figure 6: Day-by-day distribution of the Subjects' Global Appreciation on Efficacy of the ACUFIRST® Impotence & Frigidity bracelet on Sexual Dysfunction.....	15

## LISTE DES LISTINGS

Listing 1 : Individual Data (all subjects): Number of daily connections of the bracelet .....	18
Listing 2 : Individual Data for Women: Subjects' characteristics, risk factors and severity of the sexual dysfunction .....	20
Listing 3 : Individual Data for Men: Subjects' characteristics, risk factors and severity of the sexual dysfunction.....	21
Listing 4 : Individual Data (all subjects): Subjects' Global Appreciation on Efficacy.....	22

## 1 Study Rationale and Experimental Device

Acupuncture, Chinese medical science existing for many centuries, is recognized and well known by the western medical world.

This medicine is based on the evolution of the energy circulating in the human body, conveyed by called ways meridian on the surface of the skin communicating with the internal organs by intermediate ways.

These meridians contain energy points or acupuncture points, the stimulation of which, by needles, by massage or by electric impulsions acts on the behavioural problems of the individual.

These fluctuations in energy represent the evolution of the Yang or the Yin, the Chinese concept of the medicine based on the modifications of these two energies, either in excess, or in deficiency.

There are 14 meridians going through the skin. The channels go from thorax to arms, then from arms to head, then from head to feet, and from feet to thorax following precise schedules according to the solar hour.

The frontside of the wrist is crossed by three meridians, the lung meridian (L), the heart meridian (H) and the master meridian of the heart MH or HS; among these, some points are used to treat specific disorders such as the meridian lung points L7 and L9, the meridian heart points H5, H6, H7 and the master heart meridian points MH6 (HS6), MH7 (HS7).

Heart points H5 (behavioural disorders connected to excesses), H6 + H7 (emotionalism and anxiety) and L7/L9 (respiratory rate and circulatory disorders) are used to treat the stress.

Heart points H5/H6 have effect on the on rhythm disorders and vago-sympathetic imbalance, and MC7 or HS7 on behavioural disorders and tightness.

The points H5, MH7 (HS7) and L7/L9 are indicated in the abuse like addiction.

Their use, the whole set of points or individual point, is known to give noteworthy benefits.

As application of these data, the ACUFIRST® Impotence & Frigidity bracelet, using the technique of stimulation of acupuncture points by electric impulses, was conceived to have effect on sexual dysfunction. Endowed with a program adapted to this trouble, the ACUFIRST® Impotence & Frigidity bracelet acts through electric impulses of weak voltage and weak intensity stimulating the specific acupuncture points for this program.

The RISE HEALTH and BEAUTY Ltd Company entrusted us with the realization of a study which objective is to demonstrate the effect of the ACUFIRST® Impotence & Frigidity bracelet on this disorder of the modern life.

## 2 Study Design and Investigators

Knowing the effects of stimulating acupuncture points by electric impulses and knowing the configuration of the microelectrodes of the ACUFIRST® Impotence & Frigidity bracelet, we agreed to realize a study on the effect of the bracelet on the Sexual Dysfunction.

The ACUFIRST® bracelet has a program aimed at improving Sexual Dysfunction, named “Impotence & Frigidity”.

The location of the bracelet on the right wrist allows the execution of this program.

The study had lasted two months and had been conducted by six therapists, physicians and physiotherapist masseurs, member of the Association for medicine, traumatology and re-education of football for District of Essonne.

Each therapist had to recruit 5 subjects. Finally, 31 subjects had participated in the study: five therapists recruited 5 subjects each and one therapist recruited 6 subjects.

Every subject was seen by the therapist the day of inclusion in the study (D0), then 15 days (D15) and 30 days (D30) later.

On Day 0 (D0), the therapist included the subject in the program, after having explained him/her the objectives and schedule of the study, in order to obtain his/her entire cooperation.

At the end of the visit, the subject was given an ACUFIRST® Impotence & Frigidity bracelet and a case report form (CRF).

Every day during 30 days, the subjects were requested

- to run the bracelet several time, and especially at each moment involving sexual desire
- to report on the CRF how many time he/she had run the ACUFIRST® Impotence & Frigidity bracelet
- to report on the CRF his/her opinion on its efficacy according to a 4-point scale:
  - 0 = not effective,
  - 1 = poorly effective,
  - 2 = fairly effective
  - 3 = very effective.

On D15 (mid study visit), the subject brought back the CRF. During this visit, he/she answered therapist’s questions on the evolution of his/her troubles. The therapist controlled that the subject has used the bracelet as he/she was instructed to, and that the CRF was correctly filled in.

On D30 (final visit), the subject brought back the CRF and answered therapist’s questions on the evolution of his/her state.

The recruitment had turned out more difficult than expected with regard to the object of the study, some matters remaining generally taboo.

All subjects included in the study had complied with all instructions provided by the therapists:

- they had used the bracelet for the planned 30 days,
- they all filled in correctly and completely the CRF.

The subject motivation can be emphasized; it had permitted to collect data of good quality.

Michel Le Faou, MD, supported by a statistician, carried out the statistical analysis.

### 3 Assessment of the Sexual Dysfunction

The evolution of the sexual dysfunction throughout the 30 days of the study was assessed by different disorders or symptoms for men and women.

#### 3.1 Questionnaire “Women”

We proposed to the women to evaluate the three more usual symptoms of the sexual dysfunction: disorders of the desire, pain coital and drop of sexual activity.

The subject had to report in the following table the severity of the symptoms on D0, D15 and D30, according to a 4-point scale:

- 0 = None
- 1 = Discreet
- 2 = Moderate
- 3 = Important.

Sexual Dysfunction Symptoms	Visit		
	D0	D15	D30
Disorders of the desire			
Pain coital			
Drop of sexual activity			

#### 3.2 Questionnaire “Men”

The men had to evaluate at D0, D15 and D30 the severity of their sexual incapacity on a 5-points scale:

- 0 : not able to have an erection
- 1 : not able to penetrate the partner
- 2 : not able to maintain the erection after penetration
- 3 : not able to maintain long enough the erection
- 4 : satisfactory erection.

### 4 Subject Characteristics

Thirty-one subjects participated to the study: 18 women and 13 men.

The female mean age (43.1 years, from 22 to 62 years) was clearly less than the male mean age (61.5 years, from 39 to 80 years).

Women’s mean height was 163 cm (155 to 175) and mean weight 61.8 kg ( 49 to 75).

Within the 18 female subjects: **4** (22%) took regularly alcohol, **7** (41%) smoked, one (5%) had an arterial high blood pressure and followed a treatment, **13** (72%) said themselves overworked, **17** (94%) felt themselves tired, **8** (44%) took an oral contraception, **8** (44%) were menopausal and **6** (33%) consulted a physician for their problem of sexual dysfunction.

Men's mean height was 177 cm (168 to 188) and mean weight 79.5 kg (48 to 108).

Within the 13 male subjects: **8** (46%) took regularly alcohol, **4** (31%) smoked, **6** (46%) had an arterial high blood pressure and followed a treatment, **6** (46%) said themselves under stress, 2 (15.5%) said themselves overworked, **6** (46%) felt themselves tired and **6** (46%) consulted a physician for their problem of sexual dysfunction.

It can be noted that also that 4 men took alcohol but did not smoke, one man soked but did not take alcohol and 3 men consumed reguralry alcohol and tobacco.

## **5 Study Results**

### **5.1 Study Data and Statistical Analysis**

All 31 subjects filled in and brought back their CRF; so there are no missing data (see data listings in section 9).

We have analysed the subject's answers to the questionnaires at D0, D15 and D30, and have summarized:

- for women, the evolution of the severity of the 3 symptoms of the sexual dysfunction (disorders of the desire, pain coital and drop of sexual activity)
- for men, the evolution of the severity of the sexual incapacity.

We considered as well interesting to present:

- how many times in the day the subjects had run the ACUFIRST® Impotence & Frigidity bracelet,
- the distribution of the subjects' global appreciation of efficacy on the 930 number of days of use (i.e. 30 days for 31 subjects)
- the day-by-day summary of the subjects' global appreciation of efficacy.

## 5.2 Efficacy on Sexual Dysfunction

### 5.2.1 Results for Women

#### 5.2.1.1 Effect of the ACUFIRST® Impotence & Frigidity bracelet on disorders of the sexual desire

At D0, important disorders were reported by 7 women, moderate by 5 women, discreet by 3 women and 3 women did not experienced these disorders.

At D15, favourable evolution was already noted: only one woman reported having still important disorders of the desire; moderate disorders were reported by 8 women, discreet by 7 women and 8 women did not experienced anymore these disorders.

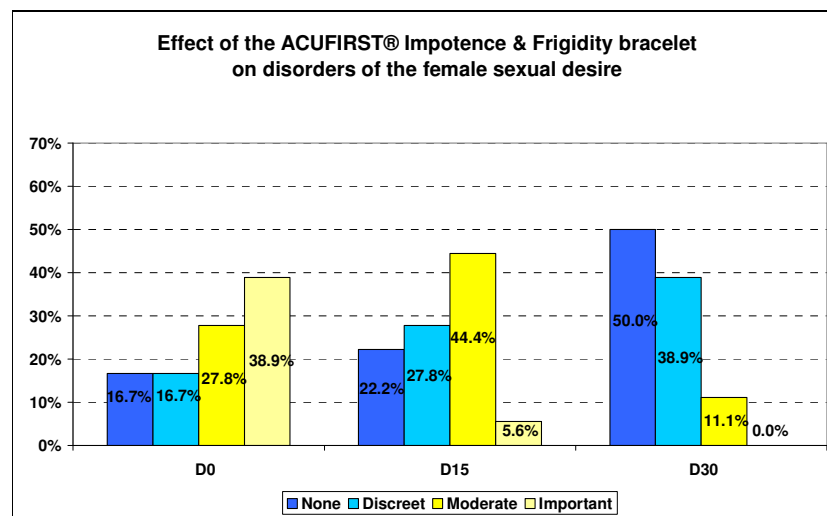
At D30, favourable improvement was still going on: no woman reported important disorders of the desire; moderate disorders were reported by 2 women, discreet by 7 women and 9 women did not experienced anymore these disorders.

In summary, the evolution is very favourable from D0 to D15, from D15 to D30, and even clearer from D0 to D30 (see Table 1).

**Table 1: Effect of the ACUFIRST® Impotence & Frigidity Bracelet on the disorders of the female desire**

Severity of the symptom	Disorders of the desire		
	D0	D15	S30
Nore	3 (16.7%)	4 (22.2%)	9 (50.0%)
Discreet	3 (16.7%)	5 (27.8%)	7 (38.9%)
Moderate	5 (27.8%)	8 (44.4%)	2 (11.1%)
Important	7 (38.9%)	1 (5.6%)	0 (0.0%)
Total	18 (100%)	18 (100%)	18 (100%)

**Figure 1: Effect of the ACUFIRST® Impotence & Frigidity Bracelet on the disorders of the female desire**





### 5.2.1.2 Effect of the ACUFIRST® Impotence & Frigidity bracelet on the pain coital

At D0, important pain coital was reported by 2 women, moderate by 2 women, discreet by 4 women and 10 women did not experienced pain.

At D15, important pain coital was reported by one woman, moderate by one woman, discreet by 5 women and 11 women did not experienced pain.

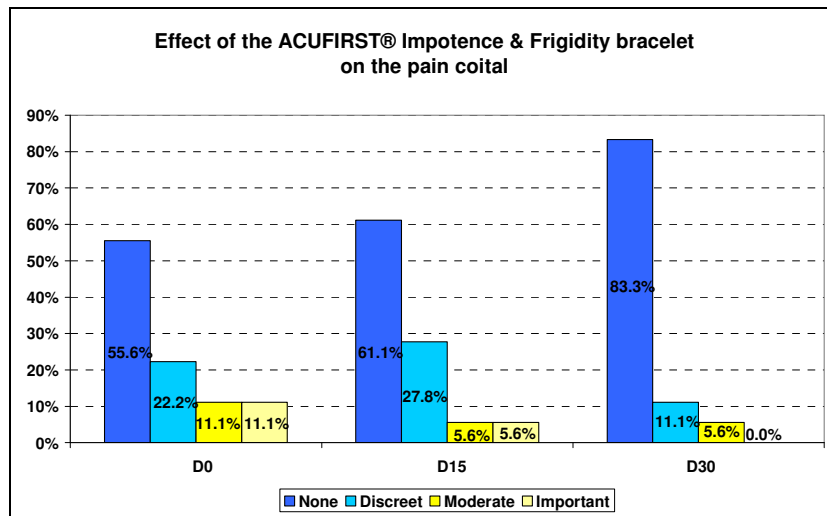
At D30, no woman complained of important pain coital; moderate pain coital was reported by one woman, discreet by 2 women and 15 women did not complain anymore of pain coital.

In summary, a clear decrease in the coital pain can be noted from D0 to D30 (see Table 2).

**Table 2: Effect of the ACUFIRST® Impotence & Frigidity Bracelet on the pain coital**

Severity of the symptom	Pain coital		
	D0	D15	S30
Nore	10 (55.6%)	11 (61.1%)	15 (83.3%)
Discreet	4 (22.2%)	5 (27.8%)	2 (11.1%)
Moderate	2 (11.1%)	1 (5.6%)	1 (5.6%)
Important	2 (11.1%)	1 (5.6%)	0 (0.0%)
Total	18 (100%)	18 (100%)	18 (100%)

**Figure 2: Effect of the ACUFIRST® Impotence & Frigidity Bracelet on the pain coital**



### 5.2.1.3 Effect of the ACUFIRST® Impotence & Frigidity bracelet on the drop in sexual activity

At D0, important drop in sexual activity was reported by 6 women, moderate by 7 women, discreet by 2 women and 3 women had no problem.

At D15, no woman complained of important drop in sexual activity, moderate drop in sexual activity was reported by 8 women, discreet by 6 women and 4 women had normal sexual activity.

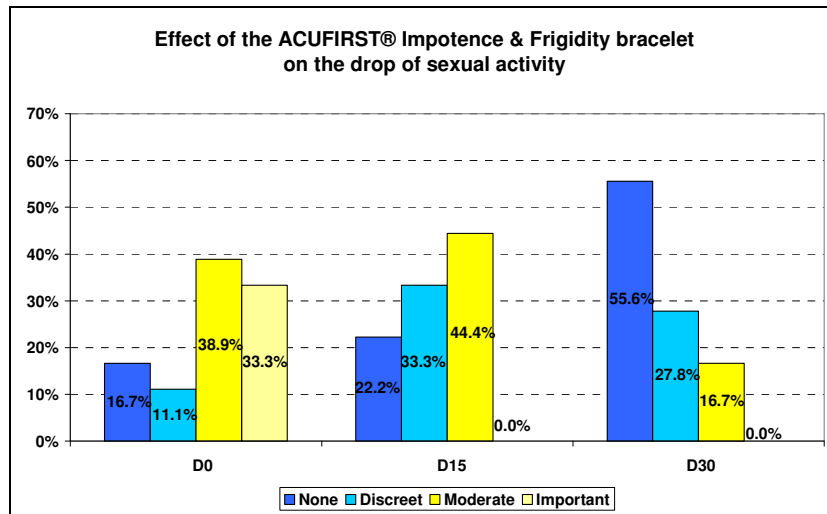
At D30, moderate drop in sexual activity was reported by 3 women, discreet by 5 women and 10 had normal sexual activity.

In summary, a clear improvement can be noted from D0 to D30 (see Table 3).

**Table 3: Effect of the ACUFIRST® Impotence & Frigidity Bracelet on the drop in sexual activity**

Severity of the symptom	Drop in sexual activity		
	D0	D15	S30
Nore	3 (16.7%)	4 (22.2%)	10 (55.6%)
Discreet	2 (11.1%)	6 (33.3%)	5 (27.8%)
Moderate	7 (38.9%)	8 (44.4%)	3 (16.7%)
Important	6 (33.3%)	0 (0.0%)	0 (0.0%)
Total	18 (100%)	18 (100%)	18 (100%)

**Figure 3: Effect of the ACUFIRST® Impotence & Frigidity Bracelet on the drop in sexual activity**



## 5.2.2 Results for Men

At D0, one subject said being not able to have an erection; 3 men were not able to penetrate the partner, 4 subjects could not maintain the erection after penetration and 5 men could not maintain long enough the erection.

At D15, one subject said being not able to penetrate the partner, 4 subjects could not maintain the erection after penetration, 8 men could not maintain long enough the erection and one man had a satisfactory erection.

At D30, one subject said being not able to have an erection, one subject could not maintain the erection after penetration, 7 men could not maintain long enough the erection and 4 men had a satisfactory erection.

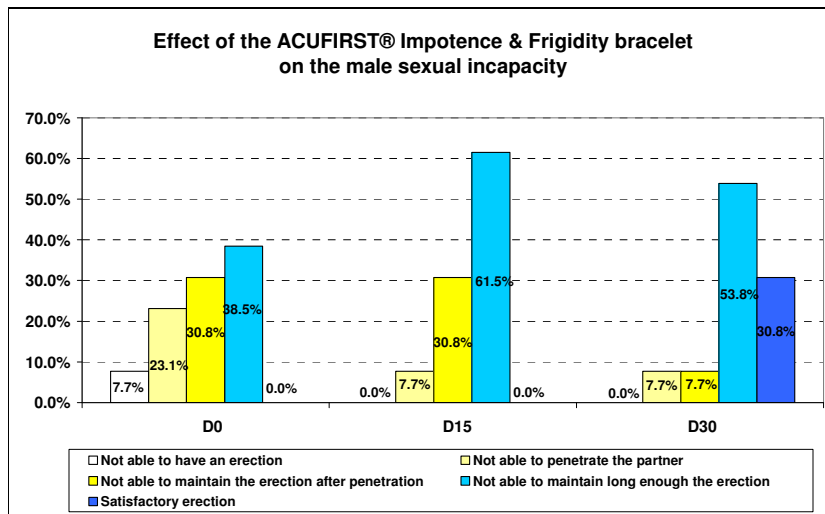
In summary, the evolution is very favourable at D30 compared to D0: 7 subjects improved their sexual state of one point, 4 subjects of 2 points, one subject was unchanged and staid at the same level at D0, D15 and D30; one subject worsened of one point his sexual incapacity from D0 to D30.

These results are interesting as they show a clear improvement in the subject's sexual state at D30 compared to D0 (see Table 4).

**Table 4: Effect of the ACUFIRST® Impotence & Frigidity Bracelet on the Male Sexual Incapacity**

Severity of the symptom	Sexual Incapacity		
	D0	D15	S30
Not able to have an erection	1 (7.7%)	0 (0.0%)	0 (0.0%)
Not able to penetrate the partner	3 (23.1%)	1 (7.7%)	1 (7.7%)
Not able to maintain the erection after penetration	4 (30.8%)	4 (30.8%)	1 (7.7%)
Not able to maintain long enough the erection	5 (38.5%)	8 (61.5%)	7 (53.8%)
Satisfactory erection	0 (0.0%)	1 (7.7%)	4 (30.8%)
Total	13 (100%)	13 (100%)	13 (100%)

**Figure 4: Effect of the ACUFIRST® Impotence & Frigidity Bracelet on the Male Sexual Incapacity**



### 5.2.3 Frequency of use of the ACUFIRST® Impotence & Frigidity bracelet

All the 31 subjects had used the bracelet for 930 days in total. The daily mean connection was 13 (see Listing 1), with a minimum of one time and a maximum of 13 times (see Table 5).

**Table 5: Frequency of use of the ACUFIRST® Impotence & Frigidity Bracelet**

	Total number of days of use	Number of daily connections			
		Total number of connections	Mean	Min	Max
Women (n=18)	540	7 012	13	1	20
Men (n=13)	390	4 183	11	1	19
Total (n=31)	930	11 195	12	1	20

#### 5.2.4 Subjects' global appreciation on efficacy of the ACUFIRST® Impotence & Frigidity bracelet

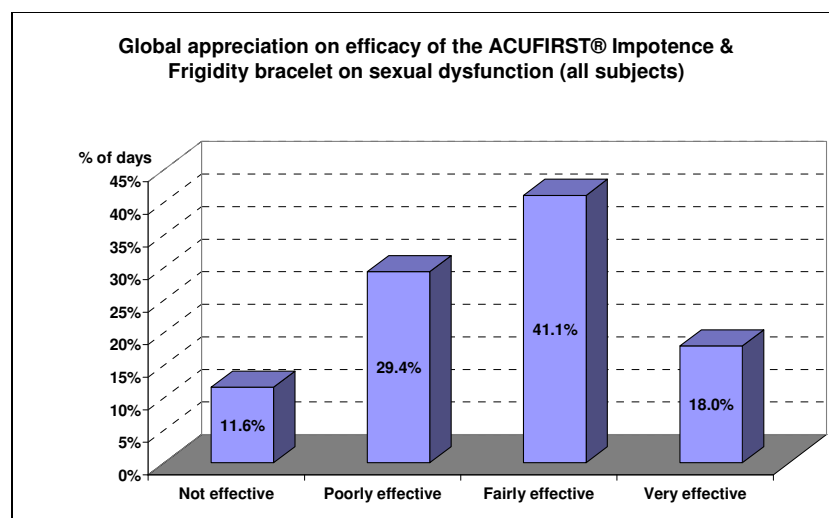
The results shows a clear trend toward the efficacy of the ACUFIRST® Impotence & Frigidity bracelet on Sexual Dysfunction: on the 930 days of use, the subjects considered the bracelet as effective for 549 days (59%) (fairly effective for 382 days - 41% - and very effective for 17 days - 18% -), poorly o not effective for 381 days (41%) (see Table 6 and Figure 5).

**Table 6: Subjects' global appreciation on efficacy of the ACUFIRST® Impotence & Frigidity bracelet on sexual dysfunction (all subjects)**

	<i>Women</i>		<i>Men</i>		<i>All subjects</i>	
	<i>n*</i>	<i>%</i>	<i>n*</i>	<i>%</i>	<i>n*</i>	<i>%</i>
Not effective	58	10.7%	50	12.8%	108	11.6%
Poorly effective	152	28.1%	121	31.0%	273	29.4%
Fairly effective	229	42.4%	153	39.2%	382	41.1%
Very effective	101	18.7%	66	16.9%	167	18.0%
Total	540	100.0%	390	100.0%	930	100.0%

\* n total number of days of use

**Figure 5: Subjects' global appreciation on efficacy of the ACUFIRST® Impotence & Frigidity bracelet on sexual dysfunction (all subjects)**

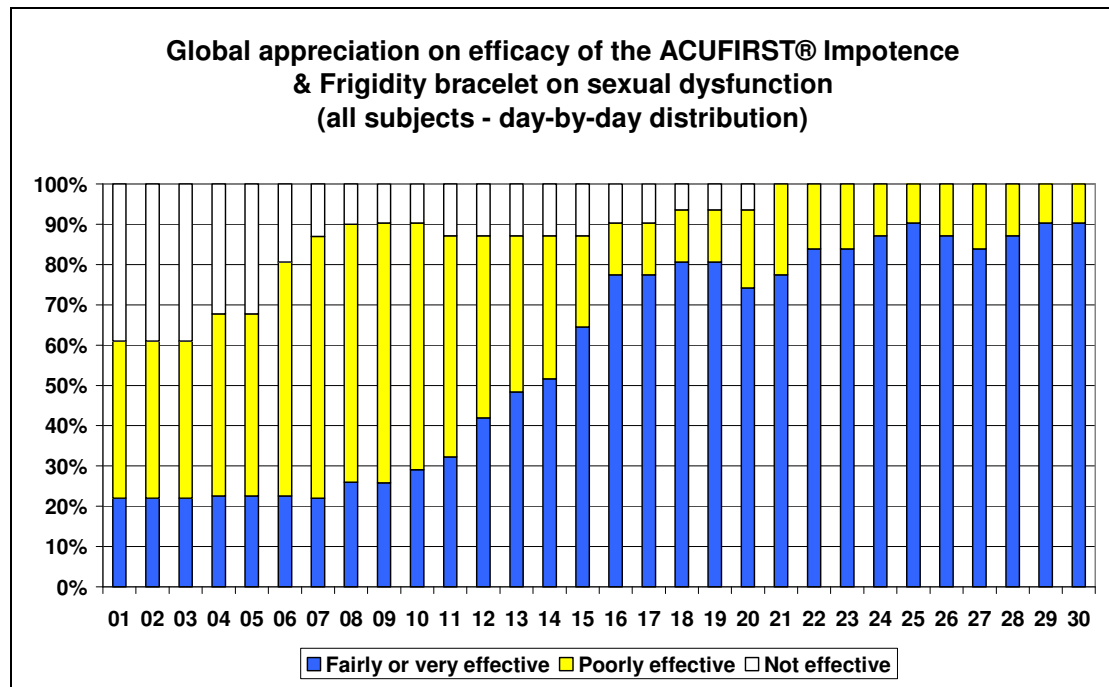


During the 30 days, more than half subjects judged the bracelet fairly or very effective on the sexual dysfunction from the 14<sup>th</sup> day onward; they were more then 50% from the 22<sup>th</sup> day to the 30<sup>th</sup> day (see Table 7 and Figure 6).

**Table 7: Day-by-day distribution of the Subjects' Global Appreciation on Efficacy of the ACUFIRST® Impotence & Frigidity bracelet on Sexual Dysfunction**

<i>Day</i>	<i>Not effective</i>	<i>Poorly effective</i>	<i>Fairly or very effective</i>
<i>01</i>	39%	39%	21%
<i>02</i>	39%	39%	21%
<i>03</i>	39%	39%	21%
<i>04</i>	32%	45%	23%
<i>05</i>	32%	45%	23%
<i>06</i>	19%	58%	23%
<i>07</i>	13%	65%	23%
<i>08</i>	10%	65%	26%
<i>09</i>	10%	65%	26%
<i>10</i>	10%	61%	29%
<i>11</i>	13%	55%	32%
<i>12</i>	13%	45%	42%
<i>13</i>	13%	39%	48%
<i>14</i>	13%	35%	52%
<i>15</i>	13%	23%	65%
<i>16</i>	10%	13%	77%
<i>17</i>	10%	13%	77%
<i>18</i>	6%	13%	81%
<i>19</i>	6%	13%	81%
<i>20</i>	6%	19%	74%
<i>21</i>	0%	23%	77%
<i>22</i>	0%	16%	84%
<i>23</i>	0%	16%	84%
<i>24</i>	0%	13%	87%
<i>25</i>	0%	10%	90%
<i>26</i>	0%	13%	87%
<i>27</i>	0%	16%	84%
<i>28</i>	0%	13%	87%
<i>29</i>	0%	10%	90%
<i>30</i>	0%	10%	90%

**Figure 6: Day-by-day distribution of the Subjects' Global Appreciation on Efficacy of the ACUFIRST® Impotence & Frigidity bracelet on Sexual Dysfunction**



## 6 Discussion

This open study had evaluated the effect of the ACUFIRST® Impotence & Frigidity bracelet on sexual dysfunction and had shown a net trend in favour of the efficacy of the bracelet.

The statistical analysis consisted in descriptive presentation of results on questionnaires specific for women and men at D0, D15 and D30, as well as the distribution of the subject appreciation on efficacy, expressed in days over the total of 930 days of use, thus 930 opinions of subjects. The evolution of this subject appreciation was summarised by its day-by-day distribution.

The clinical disorders taken in account in the study are the usual symptoms in sexual dysfunction.

The study results are built on the global appreciation of the subjects, based on the way they experienced their sexuality during the study time.

We have also taken in account their way of life by seeking the risk factors responsible for their personal problems such as stress, high blood pressure, tiredness, overworking.

We did not have tried to bring to light the anatomical or biomechanical causes responsible for the female sexual dysfunction.

Neither women nor men had been submitted to clinical examination.

The study was based only on the questionnaires.

The male subjects were asked to avoid any drugs or products that may have impact on the erectile dysfunction.

It can be guessed that the study had led the subjects to wake up and to be interested in their own sexuality.

We cannot eliminate the psychic contribution of the bracelet and the awakening to the sexual act of subjects who accepted the dysfunction as a fate.

For this first pragmatic approach, we also chose to consider the daily appreciation of every subject on the bracelet efficacy during thirty days; the high number of data allowing valid statistical calculations.

It is interesting to note that the subjects' global appreciations match well with the questionnaire results.

The manipulation of the ACUFIRST® bracelet was made easier by the specific pre-programming of the bracelet.

The realization of the study required to target well the subjects and to give them a long and detailed explanation for the understanding of the protocol.

No cutaneous reaction of allergy-type to metal was reported.



## 7 Conclusion

The results obtained in the study reveal a real efficacy of the ACUFIRST® Impotence & Frigidity bracelet on the Sexual Dysfunction.

The subjects confirmed these results as they considered that the ACUFIRST® Impotence & Frigidity bracelet had improved the state of their sexual dysfunction.

This study relied essentially on objective and subjective criteria and would require to be confirmed by a long-term study, including larger number of subjects.

The technique presents the advantage to make the subject aware of and to take responsibility for him/herself.

Switching on the bracelet during the day, and especially around the moments of sexual life helps to face often difficult situations.

It would be only for it, the bracelet brings a plus for taking charge of the sexual dysfunction.

## 8 Bibliography

LEBARBIER A, *Acupuncture pratique*, ed. Maisonneuve, 1975.

LAVIER J A, *Vademecum d'acupuncture symptomatique*, ed. Maloine, 1985.

*Les tests du capitaine*, Mémo Programme Mens Sana 91000 Evry.

COUCHAERE M J, *Eduquer la mémoire*, 3ème édition, France:ESF éditeur, 1990.

UNGERLEIDER, L G, *Les dédales de la mémoire. Une fois l'objet disparu, l'imagerie suit sa trace dans le cortex cérébral*, La recherche (spécial), juillet et août 1996.

## 9 Data Listings

**Listing 1 : Individual Data (all subjects): Number of daily connections of the bracelet**

Initials	LR	MJC	CK	YL	MP	SM	CJ	SS	MB	CJ	FL	RM	PN	MS	ML	PL	MC	MA	JPG	JR	MD	LV	JS	BB	CS	PM	GR	XB	JM	KA	JJV
Sex	F	F	F	F	F	F	F	F	F	F	F	F	F	F	F	F	F	F	M	M	M	M	M	M	M	M	M	M	M	M	M
Days																															
01	12	16	20	13	11	8	10	15	18	11	6	20	15	17	9	8	16	6	7	12	10	7	15	10	8	13	4	14	6	10	16
02	12	16	19	13	11	8	11	15	18	11	6	19	17	18	10	9	17	10	7	12	11	8	14	10	8	13	4	14	6	10	17
03	13	16	19	9	11	8	10	16	18	14	8	20	17	16	11	9	17	10	7	12	12	8	12	10	9	13	5	14	7	10	18
04	12	13	20	9	13	7	11	18	15	15	8	18	18	18	10	11	17	10	8	13	13	10	12	11	8	12	4	15	6	12	19
05	12	15	19	12	12	7	11	17	15	11	10	19	14	16	11	0	19	10	8	13	10	11	12	11	9	12	5	14	6	10	16
06	12	8	19	13	12	7	10	15	16	11	11	15	13	17	10	9	17	10	8	10	14	11	15	10	7	15	4	15	7	10	17
07	14	8	20	13	13	8	11	19	16	13	10	19	15	18	11	10	16	10	9	10	14	10	15	12	8	15	5	16	6	12	18
08	10	12	19	11	12	7	10	15	16	10	11	18	13	19	12	11	15	10	10	10	10	11	14	11	5	13	6	16	6	11	16
09	10	15	19	11	13	8	11	15	16	11	9	17	13	15	13	9	15	10	8	10	14	11	12	10	9	12	4	16	6	11	17
10	12	16	20	10	14	7	12	15	16	11	8	19	15	17	10	9	9	10	8	10	14	10	11	11	9	14	5	14	7	11	18
11	12	12	20	13	11	6	10	15	16	11	8	18	13	17	11	10	9	10	8	10	10	11	14	10	8	14	5	15	7	10	16
12	13	15	20	13	11	6	11	17	16	12	10	17	14	15	12	9	15	10	9	10	13	9	15	11	8	11	5	16	8	11	17
13	13	15	20	8	13	7	11	17	15	13	10	17	15	17	12	9	9	10	9	9	14	8	15	10	9	14	6	17	8	10	16
14	12	15	19	9	11	7	12	17	15	12	10	16	14	19	13	10	15	10	9	10	15	10	15	1	8	13	6	16	10	11	18
15	15	18	20	9	10	8	11	17	15	12	10	16	14	17	12	9	14	10	7	10	14	9	10	10	10	11	6	15	8	10	10
16	12	15	19	11	10	7	12	15	15	11	9	14	16	17	12	10	15	10	7	10	14	11	10	10	10	11	4	14	10	10	10
17	12	15	19	13	10	8	13	13	16	13	9	15	12	19	11	9	14	10	7	10	12	10	15	10	8	13	4	16	8	11	15
18	15	15	20	11	11	7	14	15	17	12	10	16	15	17	10	10	9	10	8	10	12	11	14	10	8	14	4	16	7	10	15
19	12	10	18	13	11	8	13	13	18	13	11	15	15	15	9	8	9	10	8	10	12	10	10	9	9	13	4	16	7	10	18
20	15	15	18	13	12	8	13	15	18	13	10	17	18	17	9	8	10	10	8	10	14	10	15	9	7	11	5	16	6	11	19

Initials	LR	MJC	CK	YL	MP	SM	CJ	SS	MB	CJ	FL	RM	PN	MS	ML	PL	MC	MA	JPG	JR	MD	LV	JS	BB	CS	PM	GR	XB	JM	KA	JJV
Sex	F	F	F	F	F	F	F	F	F	F	F	F	F	F	F	F	F	F	M	M	M	M	M	M	M	M	M	M	M	M	M
Days																															
21	13	16	18	9	11	9	12	15	18	12	10	17	17	17	10	10	10	10	9	10	14	9	15	11	5	14	6	17	6	11	16
22	12	14	18	9	12	9	13	15	15	11	10	17	15	18	9	8	15	10	7	10	12	9	14	12	8	13	5	15	6	10	17
23	12	18	19	9	11	11	12	15	16	12	11	19	14	16	10	10	16	10	7	10	12	11	10	11	8	11	6	15	8	10	17
24	13	18	19	10	11	8	11	15	16	12	11	19	15	16	8	10	16	10	8	10	12	9	10	10	9	13	6	16	8	11	18
25	15	15	19	13	12	8	11	14	16	13	8	15	14	17	9	11	16	10	7	10	12	11	15	11	9	13	6	15	10	10	19
26	12	18	20	10	12	9	12	15	16	11	8	15	13	17	10	9	15	10	8	10	14	9	15	10	5	14	5	15	8	10	17
27	1	18	20	10	12	9	12	14	15	11	8	19	13	16	10	10	16	10	9	10	12	10	12	10	8	11	5	14	6	11	17
28	12	15	20	11	11	9	12	15	18	11	10	19	14	17	11	10	17	10	9	10	14	9	14	11	7	14	5	14	6	11	15
29	12	15	19	12	11	9	11	14	18	10	10	20	15	15	11	9	15	10	9	10	12	10	14	9	8	13	6	15	6	10	19
30	10	16	19	11	11	10	12	15	14	11	9	19	15	17	12	9	16	10	8	10	12	10	15	9	9	13	5	15	6	11	19

**Listing 2 : Individual Data for Women: Subjects' characteristics, risk factors and severity of the sexual dysfunction**

Subject's characteristics				Risk factors										Sexual Dysfunction								
Initials	Age	Height	Weight	Alcohol	Tobaccp	HBP	HBP treatment	Stress	Overworking	Tiredness	Oral contraception	Menopause	Consultation	Disorders of the sexual desire			Pain coital			Drop in sexual activity		
														D0	D15	D30	D0	D15	D30	D0	D15	D30
LR	59	160	55	No	No	No		No	No	No	No	Yes	No	3	2	2	3	3	2	3	2	2
MJC	55	162	57	No	No	No		Yes	No	Yes	No	Yes	No	3	2	2	0	0	0	3	2	2
CK	62	155	60	No	Yes	No		Yes	No	Yes	No	Yes	No	2	1	0	0	0	0	0	0	0
YL	58	162	55	Yes	Yes	No		No	Yes	Yes	No	Yes	Yes	0	0	0	2	1	1	0	0	0
MP	33	175	70	No	No	No		No	Yes	Yes	Yes	No	No	1	1	0	0	0	0	2	1	0
SM	35	164	56	No	Yes	No		No	No	Yes	Yes	No	No	0	0	0	1	0	0	1	0	0
CJ	22	165	72	No	Yes	No		No	Yes	Yes	Yes	No	No	1	0	0	0	0	0	2	1	1
SS	56	165	63	Yes	No	No		Yes	No	Yes	No	Yes	No	0	0	0	0	0	0	2	1	0
MB	43	170	70	No	Yes	No		Yes	Yes	Yes	Yes	No	No	2	1	1	0	0	0	0	0	0
*JC	28	170	65	No	No	No		Yes	Yes	Yes	Yes	No	Yes	3	2	1	2	1	0	3	2	1
FL	33	152	62	No	No	No		Yes	Yes	Yes	Yes	No	No	3	3	1	0	0	0	2	2	1
RM	33	168	55	No	No	No		Yes	Yes	Yes	No	No	No	3	2	0	0	0	0	3	1	0
PN	27	160	62	No	No	No		Yes	Yes	Yes	Yes	No	Yes	3	1	0	3	2	1	2	2	0
MS	27	162	53	No	No	No		Yes	Yes	Yes	No	No	No	3	2	1	1	1	0	3	2	0
ML	58	156	66	Yes	No	No		Yes	Yes	Yes	No	Yes	Yes	1	1	0	1	1	0	2	1	0
PL	37	169	75	No	Yes	No		Yes	Yes	Yes	Yes	No	No	2	2	1	0	0	0	3	2	2
MC	50	155	48	Yes	Yes	No		Yes	No	Yes	No	Yes	Yes	2	2	1	1	1	0	2	2	1
MA	59	160	70	No	No	Yes	Yes	Yes	Yes	Yes	No	Yes	Yes	2	2	1	0	0	0	1	1	1

**Listing 3 : Individual Data for Men: Subjects' characteristics, risk factors and severity of the sexual dysfunction**

Subject's characteristics				Risk factors								Sexual Dysfunction		
Initials	Age	Height	Weight	Alcohol	Tobaccp	HBP	HBP treatment	Stress	Overworking	Tiredness	Consultation	Sexual incapacity		
												D0	D15	D30
JPG	62	180	78	No	No	No		Yes	No	Yes	Yes	3	3	4
JR	60	175	85	Yes	No	No		Yes	Yes	Yes	Yes	2	3	3
MD	66	171	82	Yes	No	No		No	No	No	No	2	2	3
LV	64	182	75	Yes	No	No		No	No	No	No	3	3	4
JS	70	175	95	Yes	No	Yes	Yes	No	No	No	Yes	1	2	3
BB	48	188	92	Yes	No	Yes	No	Yes	No	Yes	No	3	3	4
CS	39	175	64	No	Yes	No		No	No	No	No	1	2	3
PM	41	182	74	Yes	Yes	No		No	No	Yes	No	2	2	1
GR	80	177	67	No	No	Yes	Yes	Yes	No	No	Yes	3	3	3
XB	67	168	48	No	No	Yes	Yes	No	No	No	No	2	3	3
JM	75	172	90	Yes	Yes	Yes	Yes	No	No	No	No	0	1	2
KA	64	175	75	No	No	Yes	Yes	Yes	No	Yes	Yes	1	3	3
JJV	63	181	108	Yes	Yes	No		Yes	Yes	Yes	Yes	3	3	4

**Listing 4 : Individual Data (all subjects): Subjects' Global Appreciation on Efficacy**

Initials	LR	MJC	CK	YL	MP	SM	CJ	SS	MB	CJ	FL	RM	PN	MS	ML	PL	MC	MA	JPG	JR	MD	LV	JS	BB	CS	PM	GR	XB	JM	KA	JJV
Sex	F	F	F	F	F	F	F	F	F	F	F	F	F	F	F	F	F	F	M	M	M	M	M	M	M	M	M	M	M	M	M
Days																															
01	1	1	0	1	2	2	1	0	0	1	1	2	2	2	0	0	0	0	1	2	1	0	0	1	2	1	0	1	0	1	0
02	1	1	0	1	2	2	1	0	0	1	1	2	2	2	0	0	0	0	1	2	1	0	0	1	2	1	0	1	0	1	0
03	1	1	0	1	2	2	1	0	0	1	1	2	2	2	0	0	0	0	1	2	1	0	0	1	2	1	0	1	0	1	0
04	1	1	0	1	2	2	1	0	0	1	1	2	2	2	1	0	1	0	1	2	1	0	0	1	2	1	0	1	0	1	0
05	1	1	0	1	2	2	1	0	0	1	1	2	2	2	1	0	1	0	1	2	1	0	0	1	2	1	0	1	0	1	0
06	1	1	1	1	2	2	1	1	0	1	1	2	3	2	1	1	1	0	1	2	1	1	0	1	2	1	0	1	0	1	0
07	1	1	1	1	2	2	1	1	0	1	1	2	3	2	1	1	1	0	1	2	1	1	0	1	2	1	0	1	1	1	1
08	1	1	1	2	2	2	1	1	0	1	1	2	3	2	1	1	1	1	1	2	1	1	0	1	2	1	0	1	1	1	1
09	1	1	1	2	2	2	1	1	0	1	1	2	3	2	1	1	1	1	1	2	1	1	0	1	2	1	0	1	1	1	1
10	1	1	1	2	2	2	1	1	0	1	1	2	3	2	1	1	1	1	1	2	1	1	0	1	2	2	0	1	1	1	1
11	1	1	1	2	2	2	1	1	0	1	1	2	3	2	1	0	1	1	2	2	1	1	0	1	2	2	0	1	1	1	1
12	1	1	1	2	2	2	2	1	0	2	1	2	3	2	1	0	1	1	2	2	1	1	0	1	2	2	0	2	1	1	1
13	1	2	1	2	2	2	2	1	0	2	1	2	3	2	2	0	1	0	2	2	1	1	1	1	2	2	0	2	1	1	1
14	1	2	1	2	3	2	2	1	0	2	1	2	3	2	2	0	1	0	2	2	1	2	1	1	2	2	0	2	1	1	1
15	2	2	2	2	3	2	2	1	0	2	1	2	3	3	2	0	1	0	2	2	1	2	1	1	2	2	0	2	1	2	2
16	2	2	2	2	3	2	2	2	2	2	2	2	3	3	2	0	1	0	2	2	1	2	1	2	2	2	0	2	1	2	2
17	2	2	2	2	3	2	2	2	2	2	2	2	3	3	2	0	1	0	2	2	1	2	1	2	2	2	0	2	1	2	2
18	2	2	2	2	3	2	2	2	2	2	2	2	3	3	2	1	1	0	2	2	2	2	1	2	2	2	0	2	1	2	2
19	2	2	2	2	3	2	2	2	2	3	2	2	3	3	2	1	1	0	2	2	2	2	1	2	2	2	0	2	1	2	2
20	2	2	2	2	3	2	2	2	2	3	2	2	3	3	1	1	1	0	2	2	2	2	1	2	2	2	0	2	1	2	1
21	2	2	3	2	3	2	2	2	2	3	2	2	3	3	1	1	1	1	2	2	2	2	2	2	2	2	1	2	1	2	1
22	2	2	3	2	3	2	2	2	2	3	2	2	3	3	1	1	2	1	2	2	2	2	2	2	2	2	1	2	2	2	1
23	2	2	3	2	3	2	3	2	2	3	2	3	3	3	1	2	2	1	3	2	2	2	2	2	2	2	1	2	1	2	1

Initials	LR	MJC	CK	YL	MP	SM	CJ	SS	MB	CJ	FL	RM	PN	MS	ML	PL	MC	MA	JPG	JR	MD	LV	JS	BB	CS	PM	GR	XB	JM	KA	JJV
Sex	F	F	F	F	F	F	F	F	F	F	F	F	F	F	F	F	F	F	M	M	M	M	M	M	M	M	M	M	M	M	M
Days																															
24	2	2	3	2	3	2	3	2	2	3	2	3	3	3	1	2	2	1	3	2	2	2	2	2	2	2	1	2	1	2	2
25	2	2	3	2	3	2	3	2	2	3	2	3	3	3	1	2	2	1	3	2	2	3	2	2	2	2	1	2	2	2	2
26	2	2	3	2	3	2	3	3	2	3	2	3	3	3	1	2	2	1	3	2	2	3	2	3	2	2	1	2	1	2	2
27	2	2	3	2	3	2	3	3	2	3	2	3	3	3	2	1	2	1	3	2	2	3	2	3	2	2	1	2	1	2	1
28	2	2	3	2	3	2	3	3	2	3	2	3	3	3	2	1	2	1	3	2	2	3	3	3	2	2	1	2	1	2	2
29	2	2	3	2	3	2	3	3	2	3	2	3	3	3	2	1	2	1	3	2	2	3	3	3	2	2	1	2	2	2	2
30	2	2	3	2	3	2	3	3	2	3	2	3	3	3	2	1	2	1	3	2	2	3	3	3	2	2	1	2	2	2	2